



## HT28 RTJ 0



### Performance & Productivity

- Best horizontal outreach of 23,85m
- Homogenous and fluid working envelope
- Outstanding RT capacities
- Dual load capacity 230-350kg (option)

### Safety & Comfort

- Safe loading/unloading in conditions with low visibility thanks to the Activ'Lighting System (option)
- Unmatched comfort & smoothness in elevation thanks to a unique regulation system of boom movements
- Most rigid boom
- Haulotte's Activ'Shield Bar (option)

### Cost efficiency

- Haulotte Activ'Screen (on board diagnostic)
- Haulotte Stop Emission System which automatically turns off & on the engine
- Easy access to all components
- Modular basket quick and easy to repair

**Haulotte** 



# HT28 RTJ 0

ROUGH TERRAIN TELESCOPIC BOOMS

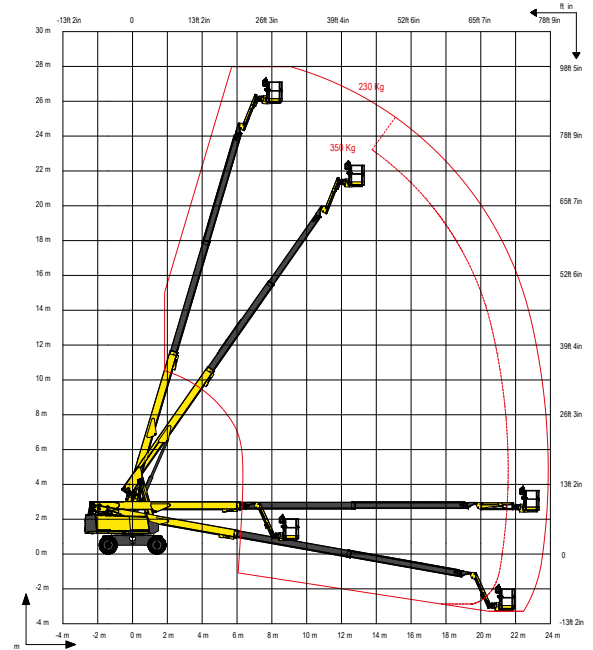


## TECHNICAL DATA

### HT28 RTJ 0

4WD-2WS

Working height	27.9 m
Platform height	25.9 m
Horizontal outreach	23.85 m
Below ground reach	3 m
Lift capacity	230 kg (2 persons)
<b>F x G</b> Platform size	2.44 x 0.91 m
<b>A</b> Length - stowed	13.05 m
<b>H</b> Length - storage	9.8 m
<b>B</b> Width	2.48 m
<b>C</b> Height - stowed	2.85 m
<b>I</b> Height - storage	2.98 m
Vertical jib rotation	133° (-66°/+67°)
Jib length	1.83 m
Boom rotation angle	84.5° (+74.5°/-10°)
Turntable rotation	360° continuous
Tailswing	150 cm
<b>D</b> Wheelbase	2.8 m
<b>E</b> Ground clearance	48 cm
Tilt	4°
Drive speed	0.5 - 5 km/h
Gradeability	45 %
Turning radius - outside	6,55 m
Tires - foam-filled	Solid RT cured on 1025x365 mm
Engine	EU: Kubota, 53kW (72hp), Stage 3B / NRC: Kubota, 49.2kW (66.8hp), Stage 3A
Weight	17 900 kg



## STANDARD EQUIPMENT

- Haulotte Stop Emission System
- Haulotte smooth proportional movements
- Haulotte Activ'Screen
- 4 wheel drive / 2 wheel steer
- Automatic differential wheel lock
- Oscillating axle
- Large modular basket 2.44 x 0.91 m
- Drop bar entry gate
- Lift capacity 230 kg
- Basket rotation 180° (+90:-90)
- Upper control box protection cover and tool tray in ultra-solid composite
- Sound and light alarm for tilt and load
- Driving sound and rotating beacon light alarms
- Safe to use in winds up to 45 km/h
- Swing out engine tray for ease maintenance
- Universal telematics plug

## OPTIONS AND ACCESSORIES

- Dual load capacity 230-350 kg (2 persons)
- Haulotte Activ' Shield™ Bar 2.0
- Lateral swing door entry gate
- Power to platform (Female plug 230V/110V)
- Hydraulic generator 3.5 kW or 6.5 kW
- Air line to platform 13 mm inner diameter
- Glazier pack
- Pipe cradle pack
- Activ'Lighting system Safe Load
- Motion flashing warning light
- Cold weather kit / Artic weather kit
- Hydraulic oil cooler
- Non-marking tires
- Battery circuit breaker

