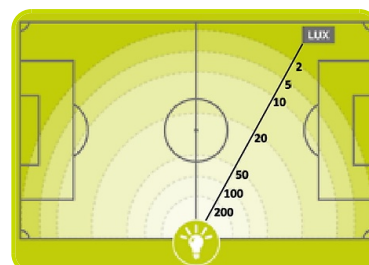


# LSW-3Y [LED]



## Lighting Features

Lighting Type		LED
Frequency	Hz	60
Voltage	V	240
Number of Lamps		4
Nominal Lamps Power (Total)	W	1280
Lighting Capacity	Lumen	188000
Lit up area	m <sup>2</sup>	4100



## Telescopic mast

Mast		Galvanized steel
Maximum height	m	8.0
Lifting System		Manual
Type of Pivoting system		Manual
Anti-pivoting system		Mechanical
Max Angle of pivoting	deg	340
Adjustable stabilizer	n°	4
Maximum wind stability	Km/h	80



### Engine specifications

Engine manufacturer		Yanmar
Model		2TNV70
Operating Speed-Nominal	rpm	1800
Engine cooling system		Water
Nr. of cylinder and disposition		2 in line
Oil capacity	l	1
Fuel		Diesel
Starting system		Electric



### Alternator Specifications

Type		Brushless
Class		H
Frequency	Hz	60
Voltage	V	240
Phases		1
Continuous power 125°/40°	kVA	4.5



### Mobility

Type of Mobility		Site Trailer
Number of Axles	nr	1
Connection drawbar		Din eye 45mm



### Dimensional data

Length	mm	2480
Width	mm	1310
Height	mm	2450
Length - operating condition	mm	2480
Width - operating condition	mm	2400
Height - operating condition (mast and outriggers extended)	mm	8000
Dry weight	Kg	640



### Autonomy

Fuel tank capacity	l	120
Fuel tank type		Bunded tank
Running time	h	200



## Control Panel

Mounted and integrated in the canopy, for monitoring, control and protection of the Light Tower.

### CONTROL SECTION

- Starting key
- Preheater signal lamp
- Emergency stop button (external)
- Hour meter
- Fuel gauge – Monitor fuel level
- Low fuel level signal lamp
- Low oil pressure signal lamp
- Battery charge signal lamp

### POWER SECTION

- Automatic earth leakage relay
- Circuit breaker for lamps switch

### SOCKET TYPE

2P+T CEE 230V 16A IP44

1



The information is aligned with the Data file at the time of download. Printed on 30/04/2021 (ID 14050)

©2021 | PR INDUSTRIAL s.r.l. | All rights reserved | Image shown may not reflect actual package. Specifications subject to change without notice